

EDIP

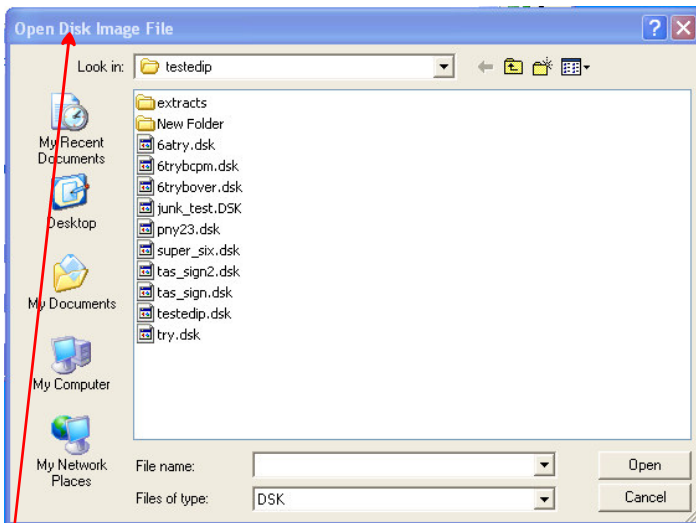
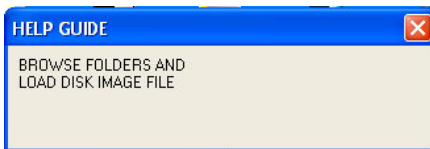
Einstein Disk Image Program

A program for MS-Windows

By Chris Coxall

Instructions

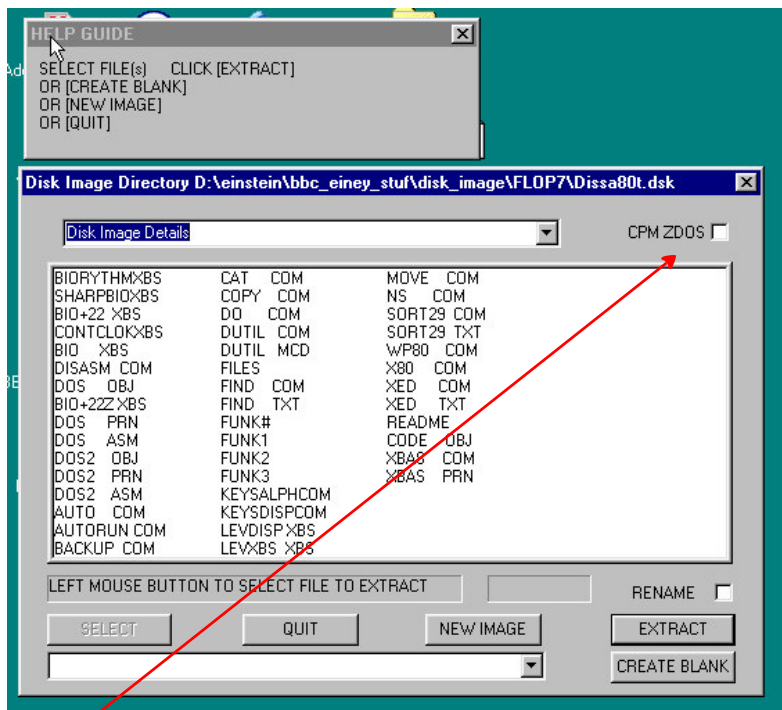
Open EDIP



A window's open save file box will be shown.

Browse folders for disk image files.
Select a disk image and open.

EDIP will open displaying the disk image's directory of Einstein files.



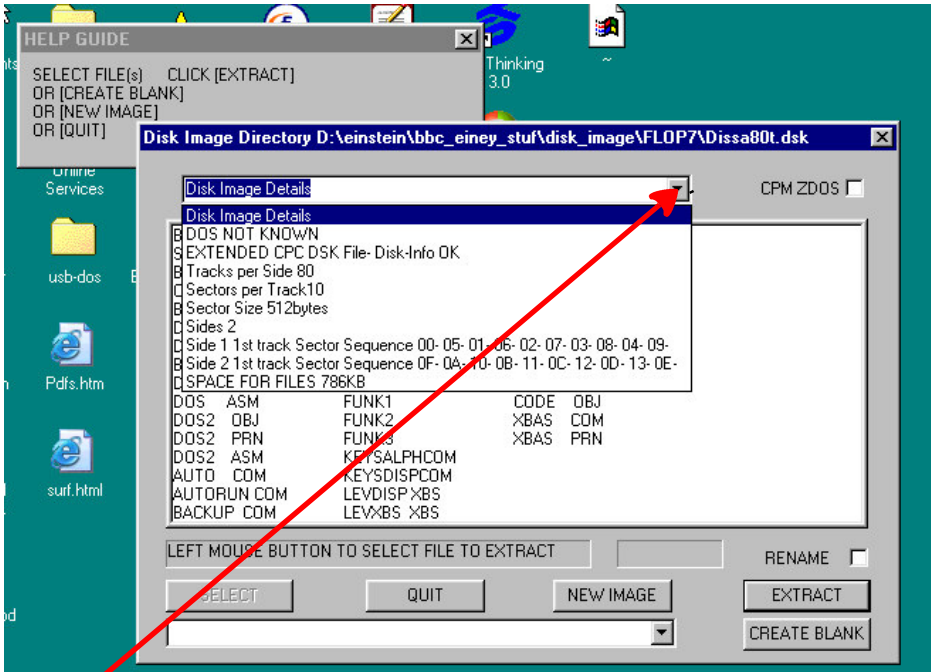
CPM ZDOS check box.

Tick this box if the disk image is known to be of a CPM 2.2 or ZDOS operating system.

Leave unchecked for XTAL dos.

EDIP can not detect a disk images operating system. Files are allocated disk space in different ways with different DOSs. If the O/S is unknown run EDIP twice with and without the CPM box checked. The two types of extracted files can then be inserted into disk images and tested to see which will run. The images can be tested in the MESS emulator or Einstein floppies can be made with CPCXP and tested in the Einstein.

Disk Image Details



The drop down box will show information of the disk image.

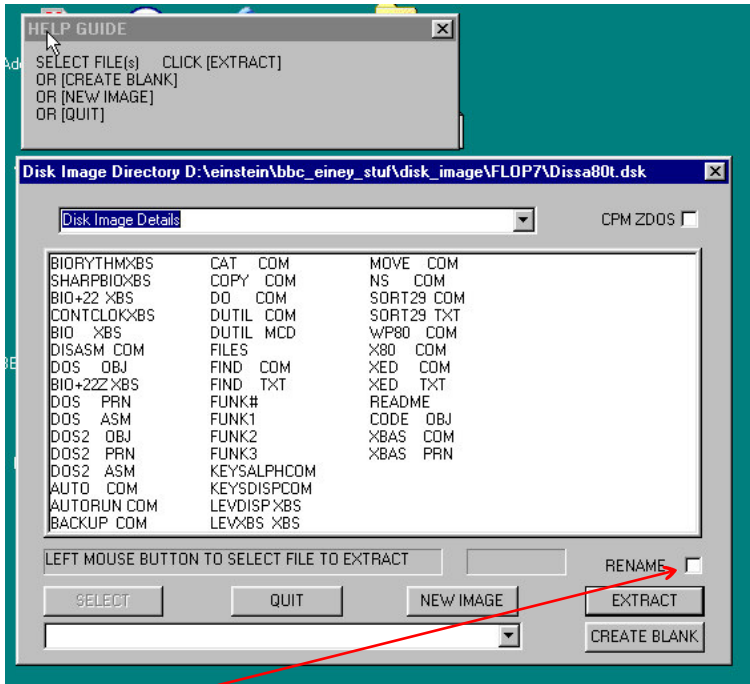
DOS: “DOS NOT KNOWN” will be shown for all images except those that have been especially created by a version of EDIP where the “CPM” check box will be set for the image’s DOS.

“EXTENDED CPC DSK File-Disk-Info OK” will be shown for original disk images not created by “EDIP”.

“EXTENDED CPC DSK File-EDIP COPY OK” will be shown for disk images created by “EDIP”.

Number of tracks, sectors, sector size, number of sides then sector scew will be shown. Finally the space for saved files in an image in kb.

Selecting Files



RENAME check box.

Unchecked single and multiple selected files will be extracted to a selected folder without names being changed except for a “.” being inserted and Einstein + dostype being added to the extension.

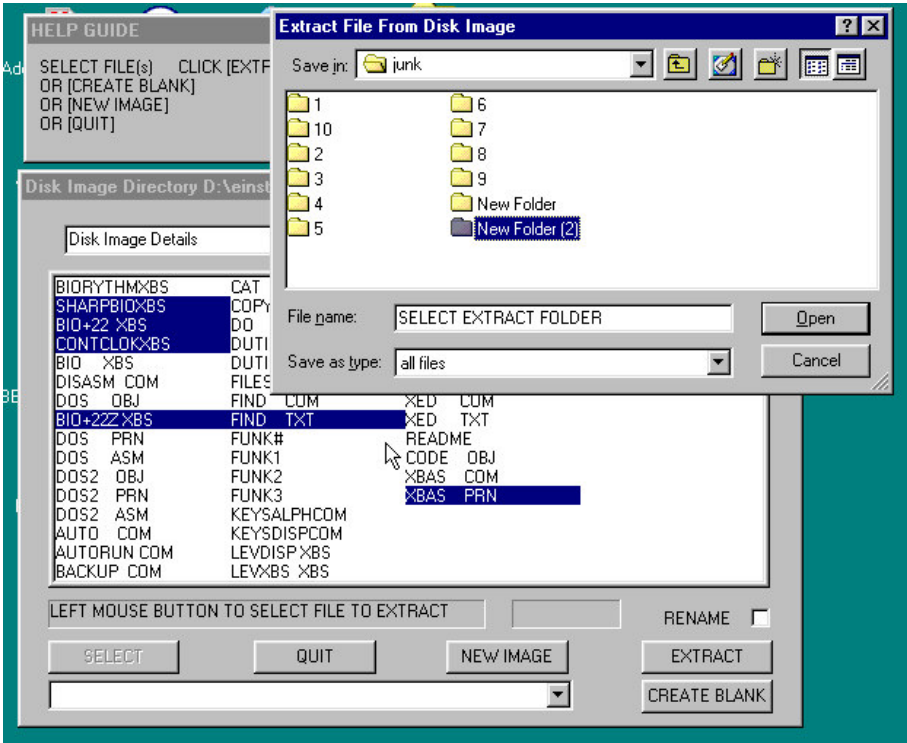
i.e. “xbas .com” will be extracted as

“xbas .com_Einstein_XTAL” or as “xbas .com_Einstein_CPM

If Einstein file names hold illegal characters for M\S file names a choice to 1. Cancel extraction 2. QUIT edip 3. To have illegal characters changed to a “_” will be given.

With a **Checked** “RENAME” each file will need to be saved through a windows “file open save dialogue box”. The dialogue box gives the choice of over writing existing files and renaming a files.

Extracting Files



Select a file or multi select files by holding down [CTRL] and left mouse clicking each file for extracting. Left mouse click [EXTRACT].

If "Rename" box is unchecked an "open save windows dialogue" box will open with "SELECT EXTRACT FOLDER" shown as default. Do NOT change it. Just browse to choose the folder for extracted files. Left click mouse on "open" to extract files.

If "Rename" box is checked files will need to be saved one at a time. Renaming and overwriting files can be done.

Extracted Files

Files extracted to windows folders will have added to their extension either “_Einstein_XTAL” or “_Einstein_CPM” depending on whether the “CPM” check box was ticked.

If the “CPM” check box has been used correctly

Left unchecked for XTAL dos disk images

Checked for “CPM2.2” or “ZDOS”

The Extracted files will be in ms/dos format. If they are text files they can be read with “NotePad” or another text editor. If correctly extracted Einstein files with either dos type extension can be later be inserted into EDIP created blanks for “CPM2.2”, “ZDOS” or “XTAL” DOSs.

If the “CPM” check box has been incorrectly used extracted files will be corrupted.

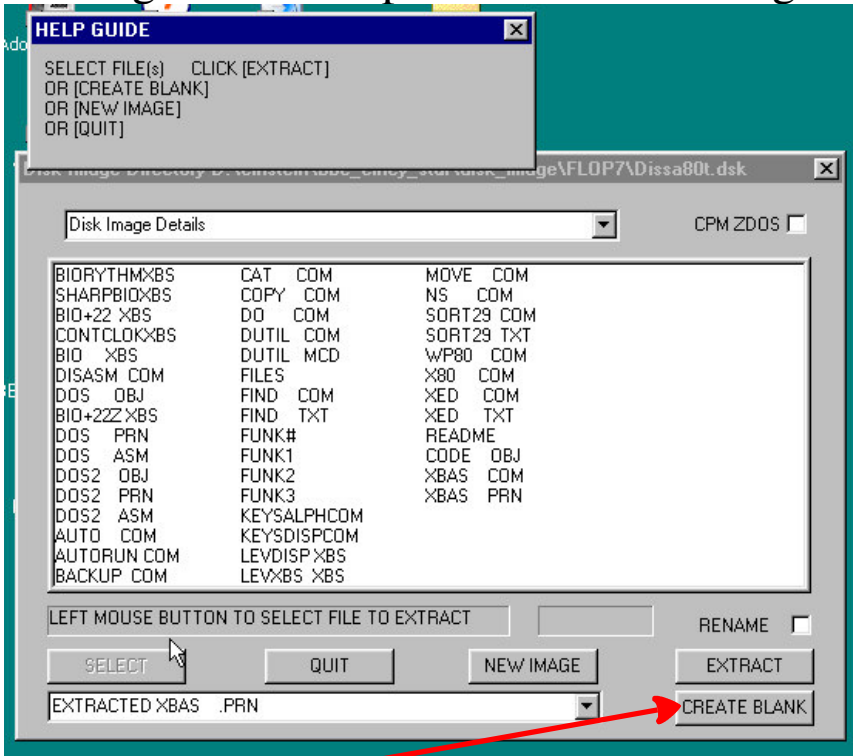
The dos type extension does nothing more than to say how files were extracted from EDIP

TESTING

If the dos type of a disk image is unknown to the user files can be extracted twice with and without the “CPM” box checked. Both types of Extracted files can then be inserted into an EDIP created blanks and tested in the “MESS” emulator to see if they will run. Or transferred by serial connection with “Eintrans” and tested in the Einstein.

The addition to an extracted file extension of “_Einstein_dostype” will not stop files being inserted into an EDIP created blank disk images or transfer by “Eintrans”. Both programs will only acknowledge the first three characters for a file extension.

Creating a Blank Replica DOS Disk Image.



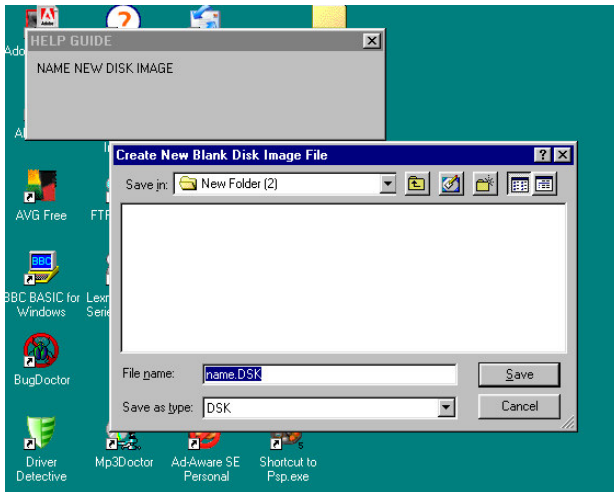
EDIP will create a blank disk copying the original image's dos so it that will boot up in in the "MESS" emulator or in the Einstein if an Einstein floppy is made of the image by "CPCdiskXP".

Einstein files in the ms\windows environment can be inserted into the image at the time of creation. EDIP can NOT insert files into an existing disk image.

To create a blank left mouse click [CREATE BLANK] button.

See Next page

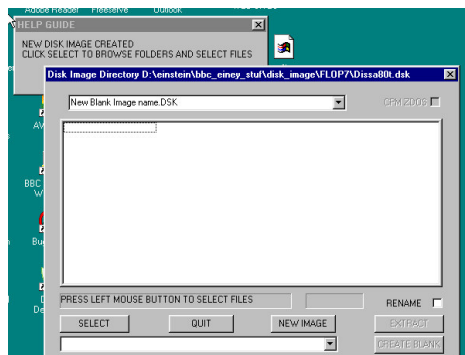
Name Blank Disk Image



After clicking the [CREATE BLANK] button an “open save” windows file box will be shown. A default “name.dsk” will be given this can be changed to your own choice. The main dialogue box will disappear.

Left mouse click the save button to create the blank image.

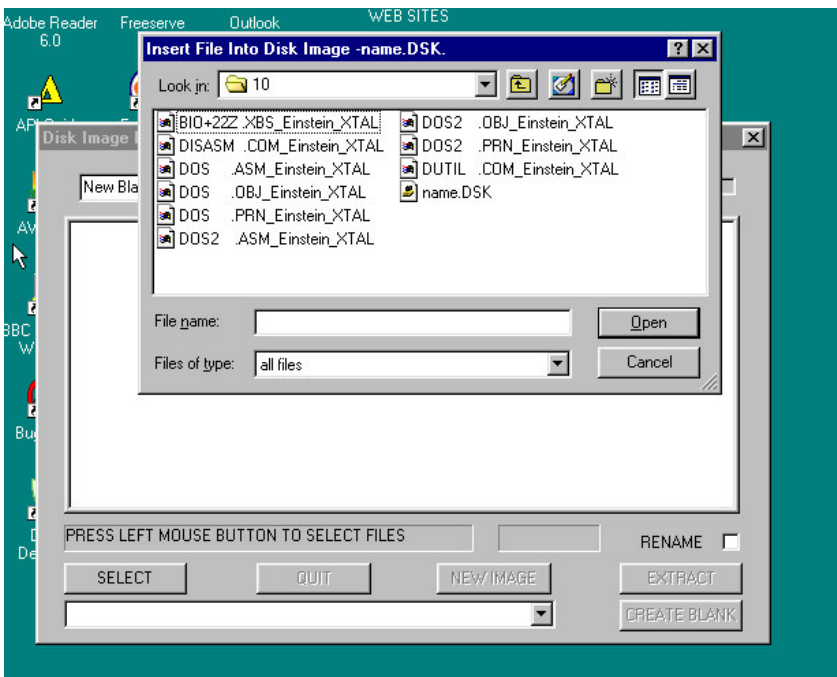
When the blank image file has been created the dialogue box will reappear. The box will show an empty screen. The blank image can now have files inserted into it.



Inserting Files

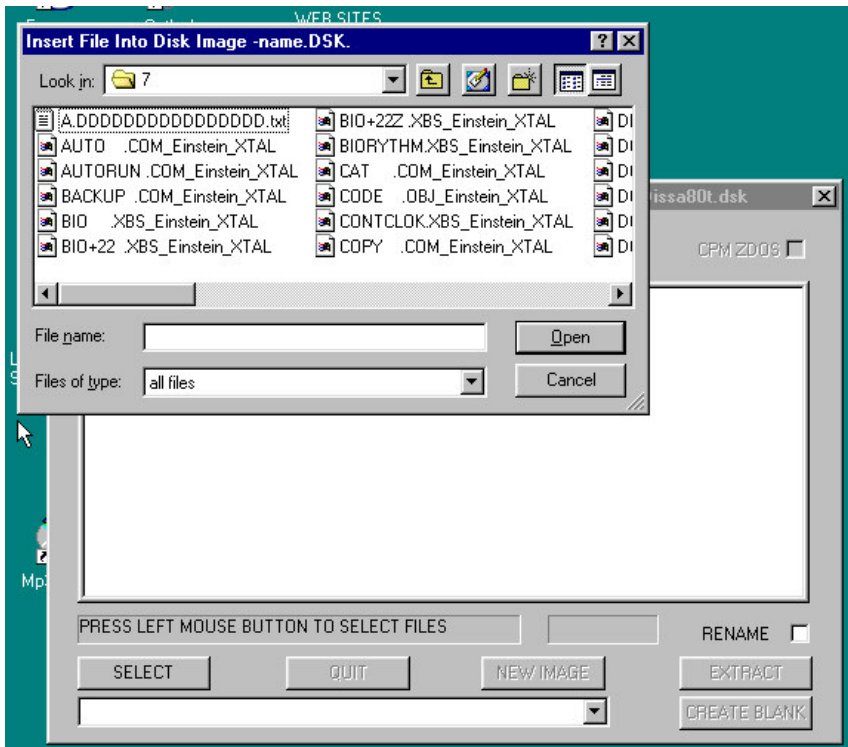
Any file in a windows folder can be inserted into the newly created image a warning will be given if a file selected is too big for the image and has not been loaded. Obviously only files that will run in the Einstein are worth loading but this does include text files created on the PC.

The “CPM” check box will have been set by the user when the original disk image was opened and before creating the blank replica. This can not be changed. EDIP extracted files with either “_Einstein_XTAL” or “_Einstein_CPM” added to the extension can be inserted without any other necessary settings.



Left mouse click the [SELECT] button for the windows “open save” dialogue box.

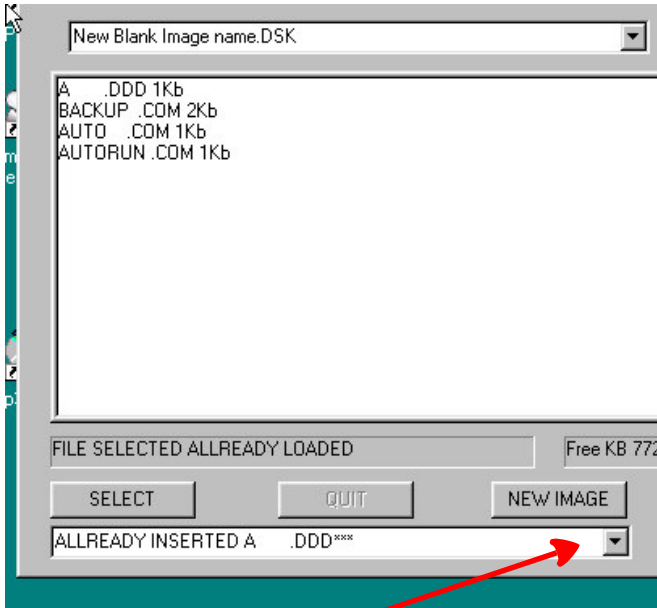
Selecting Files



Select file(s). Multi select by holding down [CTRL] key and left mouse clicking to highlight the files to be inserted. Click open.

If the “Rename” box is unchecked files will automatically be inserted. File names that do not have 8 characters for file name and 3 for an extension will be altered to do so at insertion. If more than 8 characters are used for a name only the first 8 characters will be used. Only the first 3 characters of an extension will be used. File names with less than 8 characters will have spaces added to them. Spaces will make up an extension to have 3 characters.

Files Not Inserted



EDIP will not insert files with the same name twice. This is the name as altered to be 8 characters for name and 3 for extension. A warning sound will be given and record shown in a drop down box.

EDIP will not insert files to big for the disk image also if there is not enough image space left for the size of a particular file. There will be a warning sound and a report given in the drop down box.

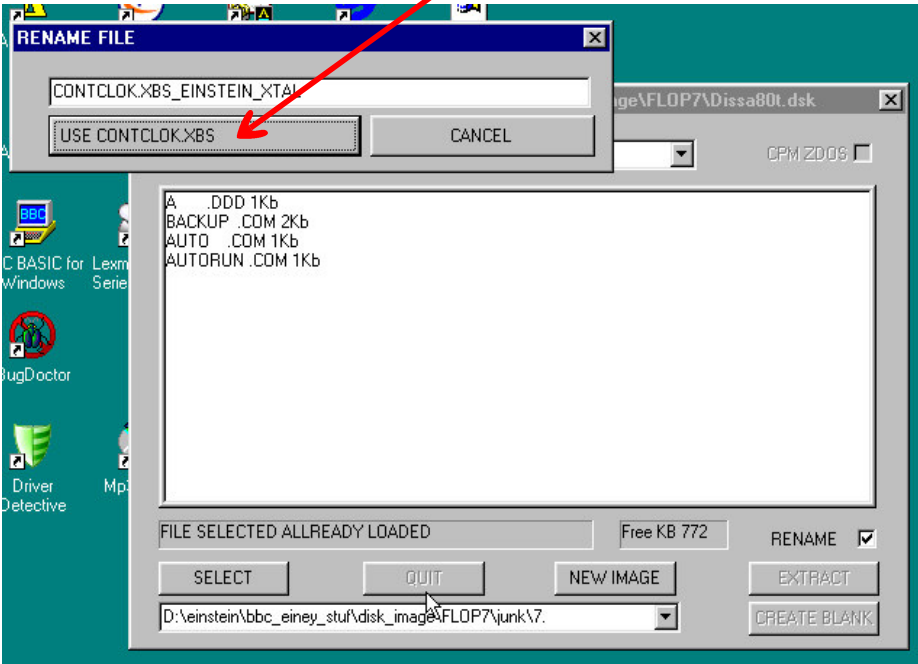
Files Inserted With The Rename Box Checked

Tick the rename check box and select files as before.

After clicking open a rename file box will be shown for each of the selected files.

Against the white back ground of the edit box the selected file name will be shown. The use button below will show the name of the file as it will be in an Einstein disk directory.

The file name in the edit box can be changed . Only file names with 8 characters including spaces and extensions with 3 characters including spaces will be used for the image. If the user renames with more or less characters. The file name will be adjusted. The file name that will be used will shown in the “[USE filename.ext]” button.



Closing EDIP

If at any time the the [QUIT] button is grayed out either left mouse click the [EXTRACT] button or [SELECT] button to show the windows open save dialogue box. Left click its [CANCEL] button. The [QUIT] button should be then cleared and EDIP can be terminated.

EDIP EINSTEIN DISK IMAGE PROGRAM Creators test notes.

EDIP was created using “Bbcbasic for Windows”

It has been used with Win98SE and XP operating systems successfully.

All Einstein disk images owned by its creator single side 40 track, single side 80 track and double side 80 track per side have been shown to work in EDIP for extracting files and inserting files.

All XTAL dos versions owned by the creator have been shown to work in EDIP.

A CP/M 2.2 version for the Einstein disk image has been shown to work in EDIP.

A ZDOS version for the Einstein disk image has been shown to work in EDIP.

Einstein Disk Images created by EDIP have worked under MESS emulation.

Working 3.5” Einstein floppies have been created from EDIP created disk images using CPCdiskXP.

EDIP has been created for Einstein Extended Disk Images.

Extended Disk Images for other computer systems are unlikely to work for extracting and inserting files.

EDIP has displayed the directory of Amstrad CP/M 2.2 files but files extracted become corrupt.

END